

OLD LYME LIEUTENANT RIVER TRAIL

OLD LYME, CT



AI Engineers
Improving Life. By Design.

EXISTING SITE CONDITIONS





TAVELLA DESIGN GROUP, LLC
LANDSCAPE ARCHITECTS

WILLIAM KENNY ASSOCIATES
LANDSCAPE ARCHITECTURE • ECOLOGICAL SERVICES
1859 Bloomfield Road Fairfield CT 06424
203 366-0588 www.wkassociates.net

PROGRAM ANALYSIS

OLD LYME LIEUTENANT RIVER TRAIL OLD LYME, CT

SCALE: 1" = 30' 1/4"
DATE: MAY 26, 2023 - 1
REF. NO. 5501



Old Lyme Multi-Use Trail

ECONOMIC ANALYSIS



TOURISM SPENDING

\$2.7B tourism dollars were spent on recreation activities in CT in 2017

42% of trail users in MA spend money while using multi-use trails

\$4 - \$13 average amount path users in MA spend per visit

\$50K potential amount generated annually by the proposed Old Lyme Multi-Use Trail



BUSINESS GROWTH

\$21K number of jobs supported by recreational tourism in CT in 2017

\$1.37B amount spent by recreational related visitors and tourism businesses in CT in 2017

2.3K number of jobs in Old Lyme

100K number of jobs in New London County

\$28K potential labor income generated annually by the proposed Old Lyme Multi-Use Trail

\$4.3K potential state/local tax dollars generated annually by the proposed Old Lyme Multi-Use Trail

\$5.7K potential federal tax dollars generated annually by the proposed Old Lyme Multi-Use Trail



PROPERTY VALUES

\$545K average value of homes in Old Lyme

\$319K average value of homes in New London County

4% - 20% potential increase in property values for homes in proximity to the proposed Old Lyme Multi-Use Trail



HEALTHCARE COSTS

\$34B amount spent on healthcare and insurance costs in CT in 2021

\$2.4K average amount each person paid for hospital outpatient services in CT in 2021

\$1.3K average amount active adults in MA save on annual healthcare costs compared to inactive adults

\$13.6K potential amount of healthcare costs saved annually by the proposed Old Lyme Multi-Use Trail

Sources

Connecticut Office of Health Strategy, Healthcare cost growth benchmark and primary care spending target initiatives - 2020 and 2021 performance. [Link Here](#).
Headwaters Economics, 2016, Measuring Trails Benefits: Overall Benefits. [Link Here](#).
MassDOT and MassTrails, 2021, Impacts of Shared Use Paths. [Link Here](#).
Tourism Economics, Economic Impact of Tourism in Connecticut, 2017. [Link Here](#).
U.S. Census Bureau, Center for Economic Studies, LEHD. [Link Here](#).

Old Lyme Multi-Use Trail

HEALTH ANALYSIS

Note: All statistics are representative of reporting adults in New London County, CT.
Sources: Common sources include the Center for Disease Control and Prevention, County Health Rankings, the US Department of Health and Human Services, the Robert Wood Johnson Foundation, and a number of studies conducted on the health benefits of physical activity. Please see the accompanying Health Analysis memo for a full list of sources.



PHYSICAL INACTIVITY & EXERCISE OPPORTUNITIES

17% of adults indicated they **do not participate in leisure-time physical activities** outside of work

9% of the population **does not have adequate access to places for physical activity**

Research shows:

12% reduction in mortality associated with active transportation

11% reduction in the risk of heart disease associated with active transportation

2x Residents in walkable communities are twice as likely to achieve the CDC's recommended amount of physical activity



ACCESS TO HEALTHY FOODS

Food Environment Index

7.6 the County's Food Environment Index score on a scale of 0 (worst) to 10 (best)

Food Insecurity

12% of residents lack adequate access to food

Limited Access to Healthy Foods

8% of residents are low income and do not live close to a grocery store, limiting their ability to access healthy foods

Research shows:

Limited access to sources of healthy and affordable food make it more difficult for some to incorporate a healthy diet into their lives. **Evidence has linked low food access to a number of health issues.** It is especially important to ensure that it is safe and convenient to walk, bicycle, or take public transit to access food in low-income communities, rural communities, and communities of color.



PHYSICAL & MENTAL HEALTH INDICATORS

31.2% have **high blood pressure** Walking can reduce the risk of high blood pressure by 7.2%

6.7% have **heart disease** Walking can reduce the risk of heart disease by 9.3%

2.9% have had a **stroke** Walking is associated with lower risks of stroke in women

32.6% have **high cholesterol** Walking can reduce the risk high cholesterol by 7%

8% have **diabetes** Physical activity can directly reduce the risk of diabetes by as much as 30-50%

7.6% have **cancer** (excluding skin cancer) Health and lifestyle risk factors are linked to certain cancers

20.8% have **depression** Active lifestyle habits can reduce the symptoms and severity of depression

31% have a **BMI greater than or equal to 30.0** Walkable and bikeable communities can help lead to reduced BMI values in residents



TAVELLA DESIGN GROUP, LLC
LANDSCAPE ARCHITECTS

WILLIAM KENNY ASSOCIATES
LANDSCAPE ARCHITECTURE • ECOLOGICAL SERVICES
1899 Bronson Road Fairfield CT 06424
203.366.0588 www.wkassociates.net

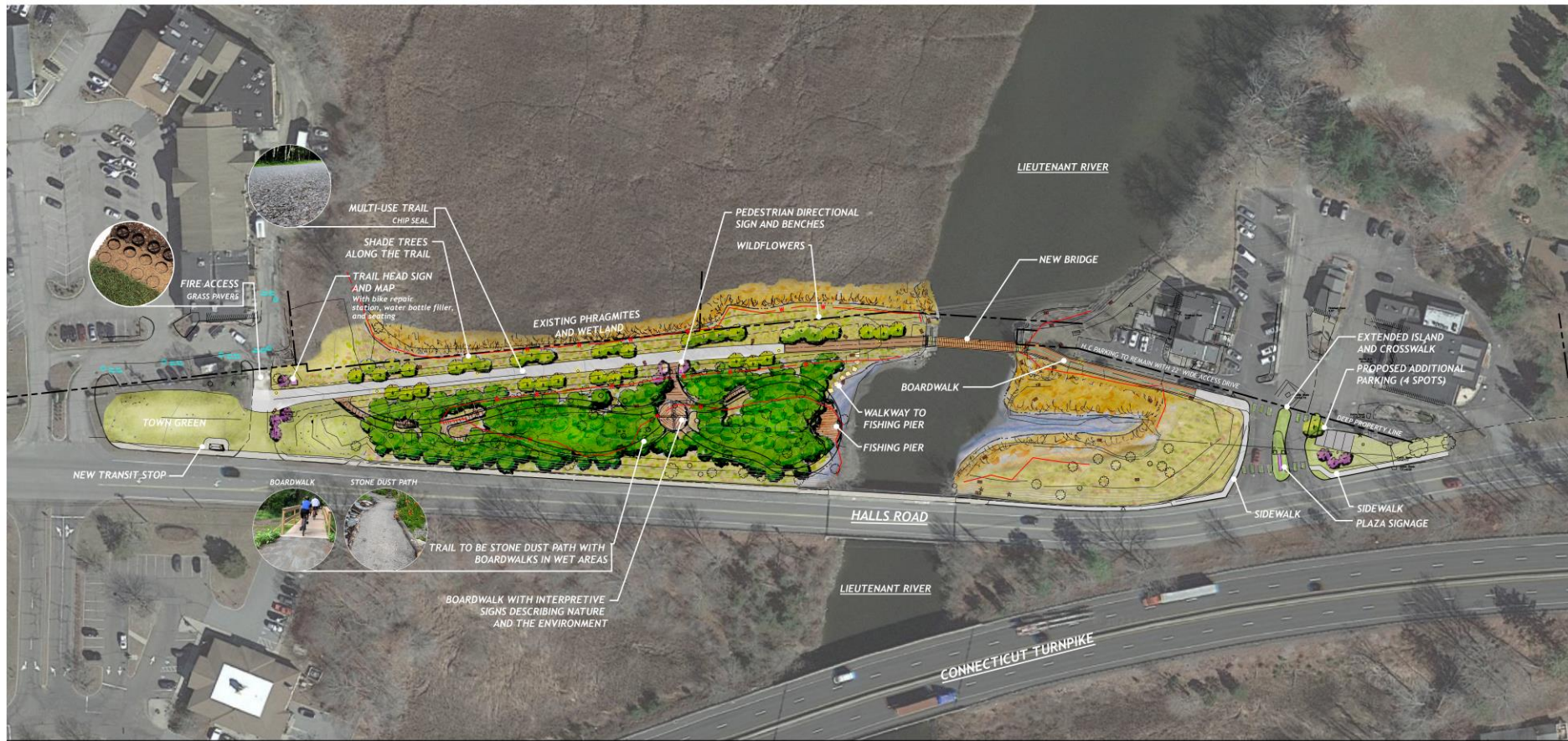
ART THEME TRAIL

OLD LYME LIEUTENANT RIVER TRAIL

OLD LYME, CT

SCALE: 1/4" = 1'-0"
DATE: MAY 26, 2023 - 1
JULY 28, 2023 - 2
AUGUST 10, 2023 - 3
REF. NO. 5501





NATURE THEME TRAIL

OLD LYME LIEUTENANT RIVER TRAIL

OLD LYME, CT



FURNISHINGS

LIGHTING



ZELA
MANUFACTURER: SCHREDER

TRIGO
MANUFACTURER: SELUX

FENCING



BIKE REPAIR STATION



TRASH RECEPTACLES



RB-36
MANUFACTURER: VICTOR STANLEY

BIKE RACKS



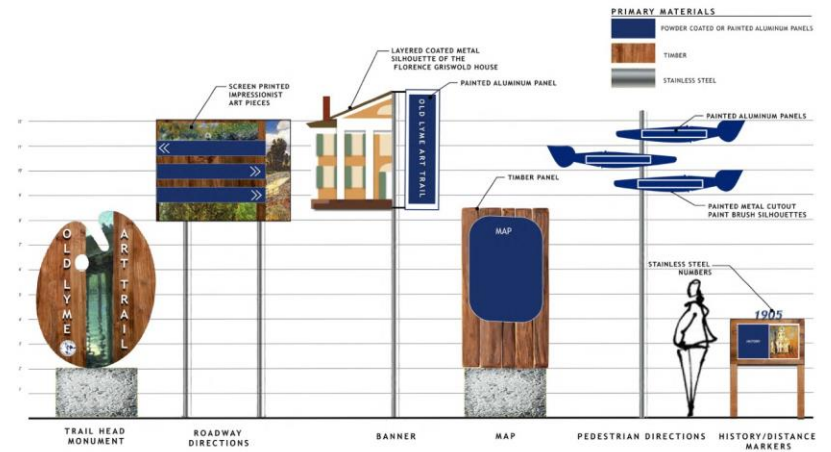
FREESIA
MANUFACTURER: VICTOR STANLEY

BENCHES



CR-10
MANUFACTURER: VICTOR STANLEY

WAYFINDING



ART THEME MATERIALS BOARD

OLD LYME LIEUTENANT RIVER TRAIL
OLD LYME, CT

FURNISHINGS

LIGHTING



GPLF3 PENDANT
MANUFACTURER: HOLOPHANE



PUCL2 LANTERN
MANUFACTURER: HOLOPHANE



ALURA LED
MANUFACTURER: SCHREDER

FENCING



TRASH RECEPTACLES



RB:36
MANUFACTURER: VICTOR STANLEY

BIKE RACKS



BRC5-107
MANUFACTURER: VICTOR STANLEY

BIKE REPAIR STATION

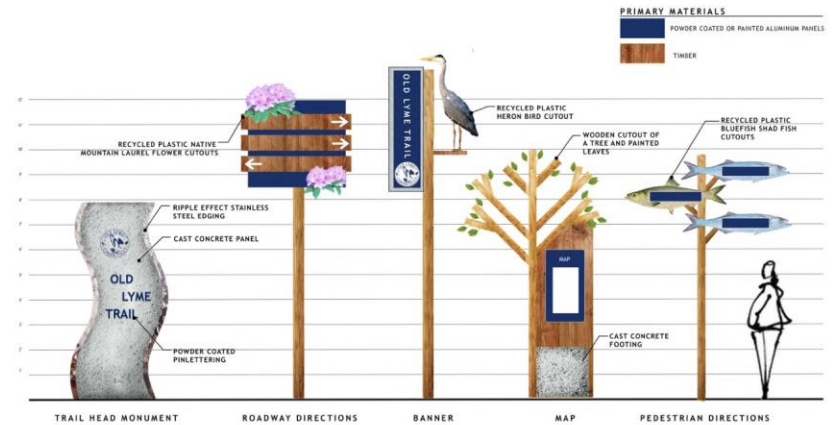


C-10
MANUFACTURER: VICTOR STANLEY

BENCHES



WAYFINDING



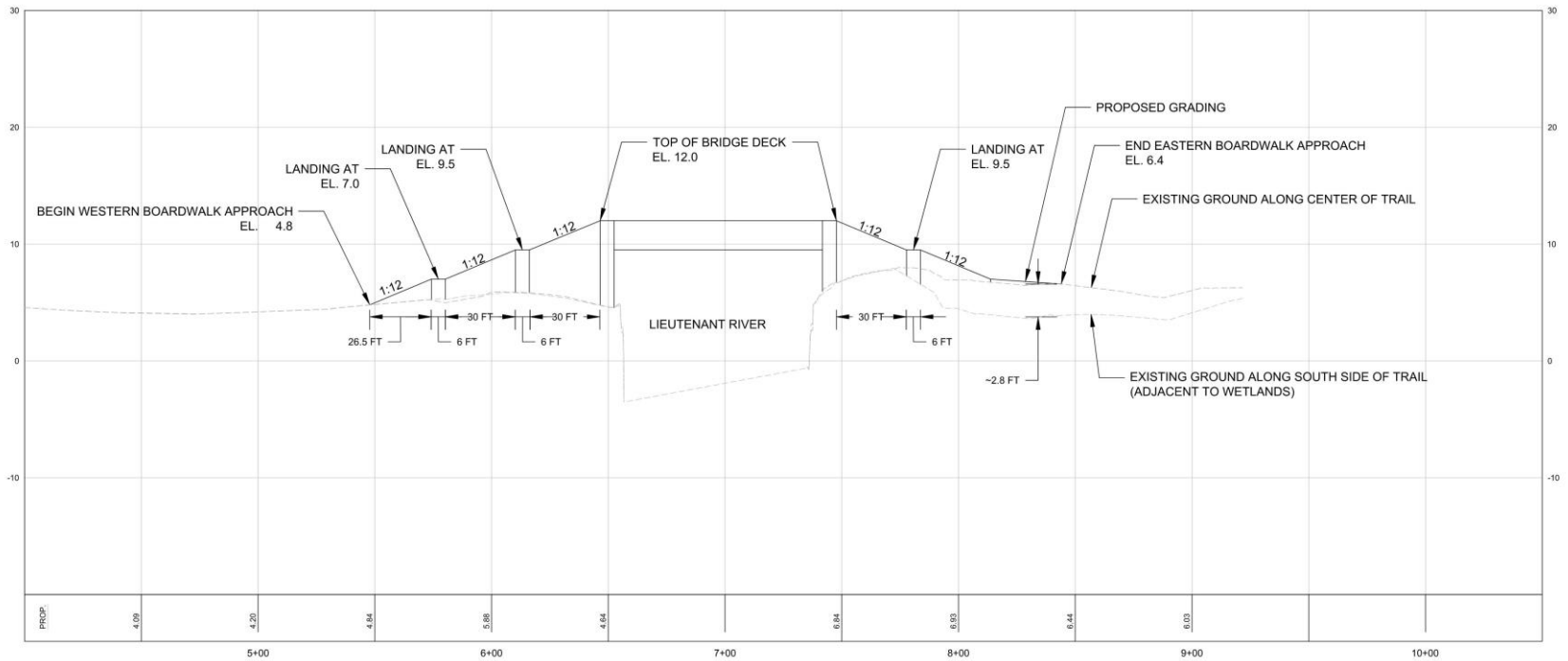
NATURE THEME MATERIALS BOARD

OLD LYME LIEUTENANT RIVER TRAIL
OLD LYME, CT

EXISTING SITE CONDITIONS



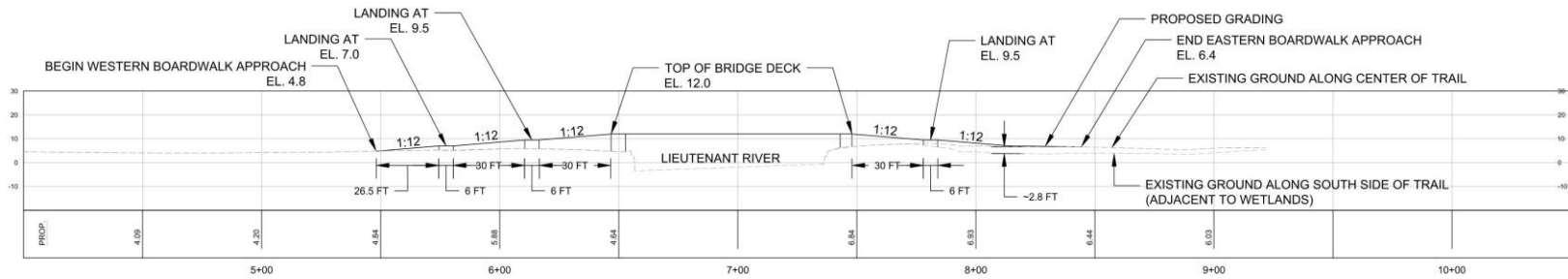
PROFILE ALONG MAIN TRAIL AND BRIDGE



PRELIMINARY TRAIL PROFILE

SCALE
HORIZ. 1" = 20"
VERT. 1" = 4"

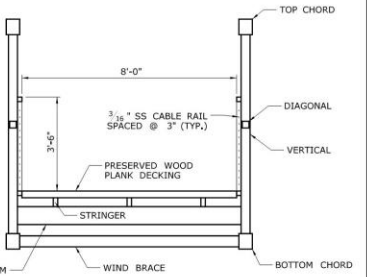
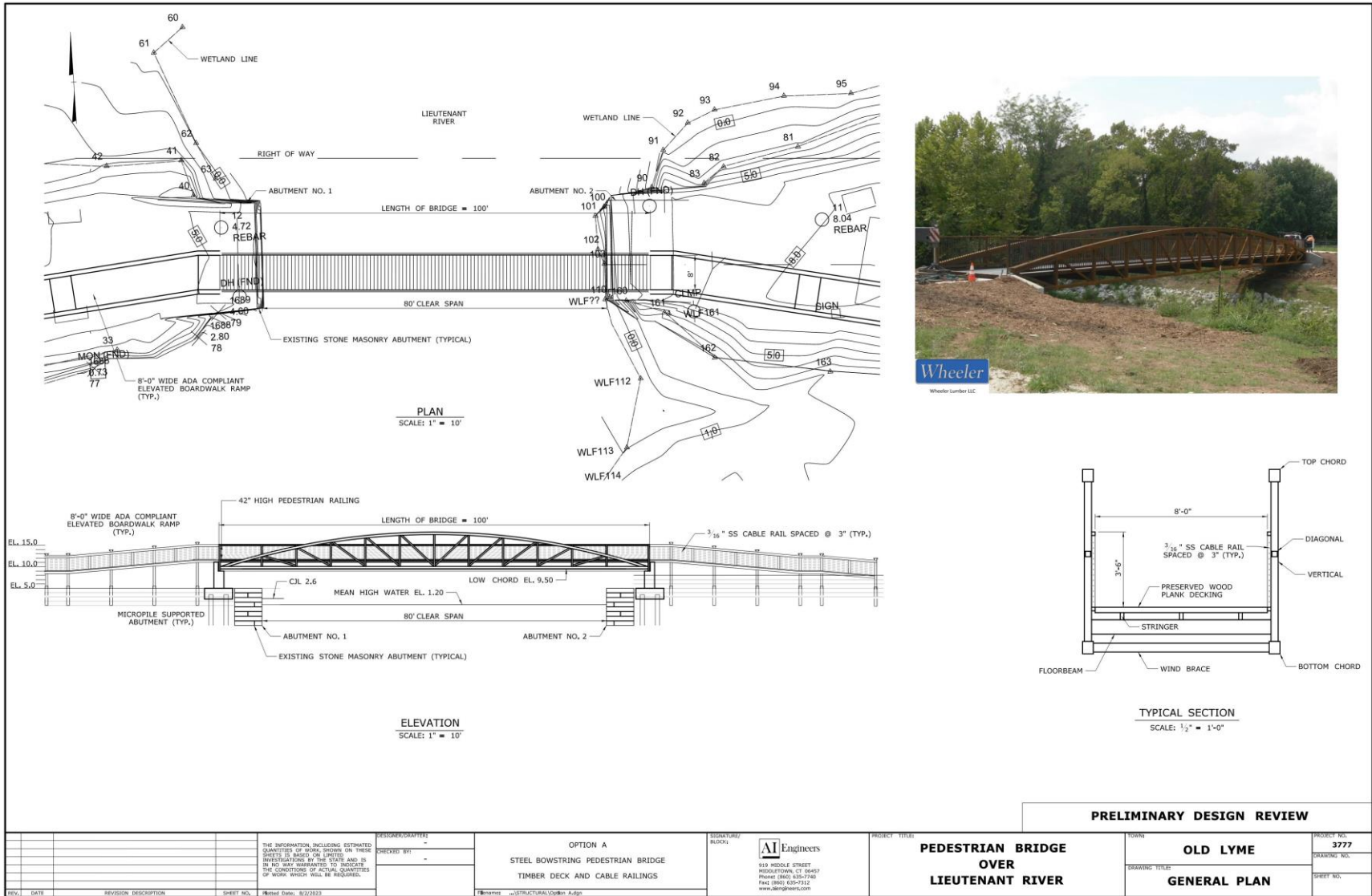
PROFILE ALONG MAIN TRAIL AND BRIDGE



PRELIMINARY TRAIL PROFILE

SCALE
 HORIZ.: 1" = 20"
 VERT.: 1" = 20"

PEDESTRIAN BRIDGE OPTION 'A' STEEL 'BOWSTRING' BRIDGE

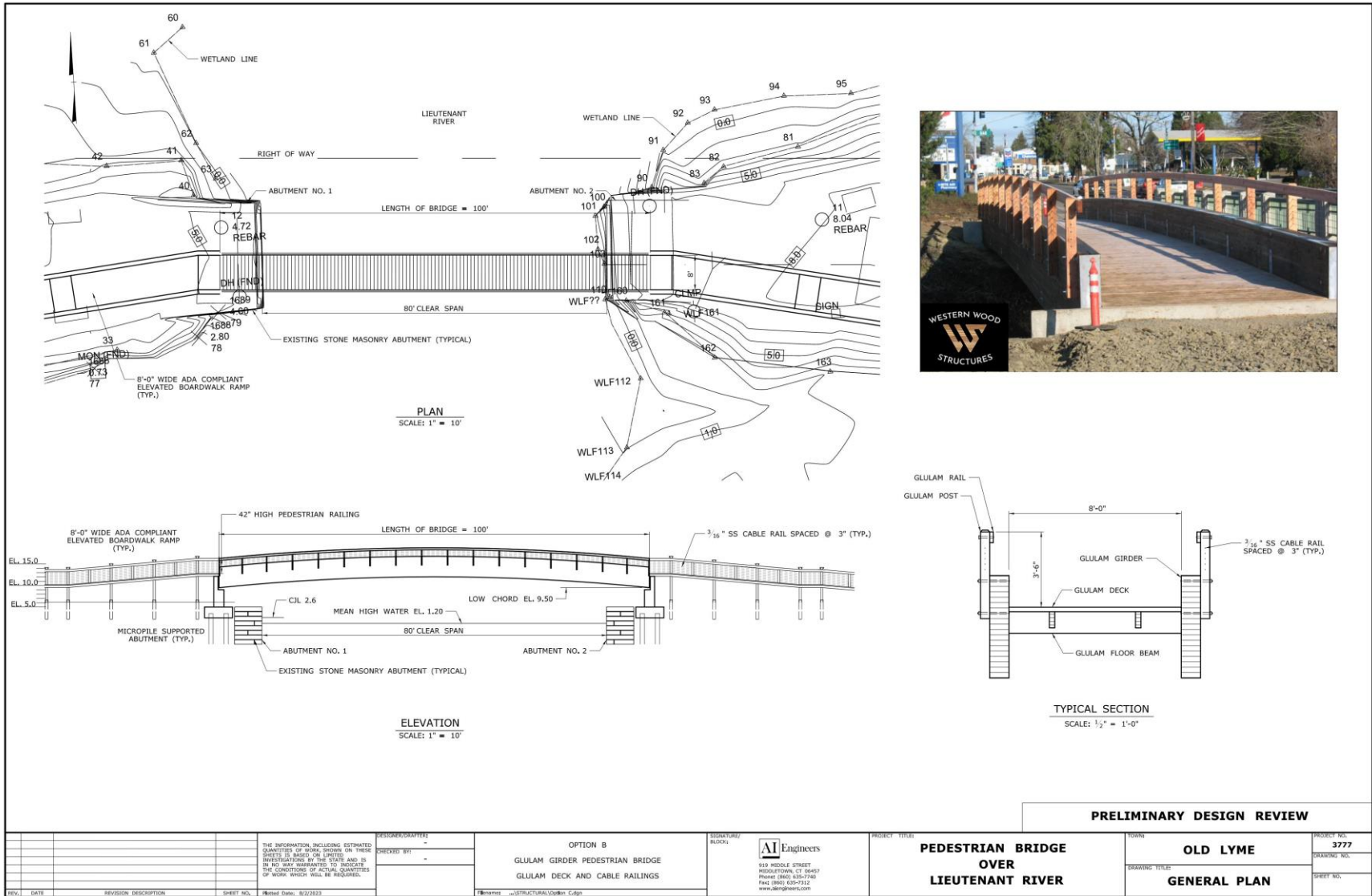


TYPICAL SECTION
SCALE: 1/2" = 1'-0"

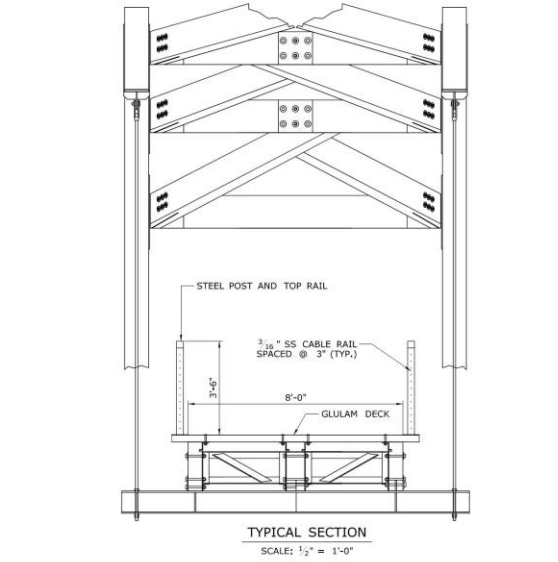
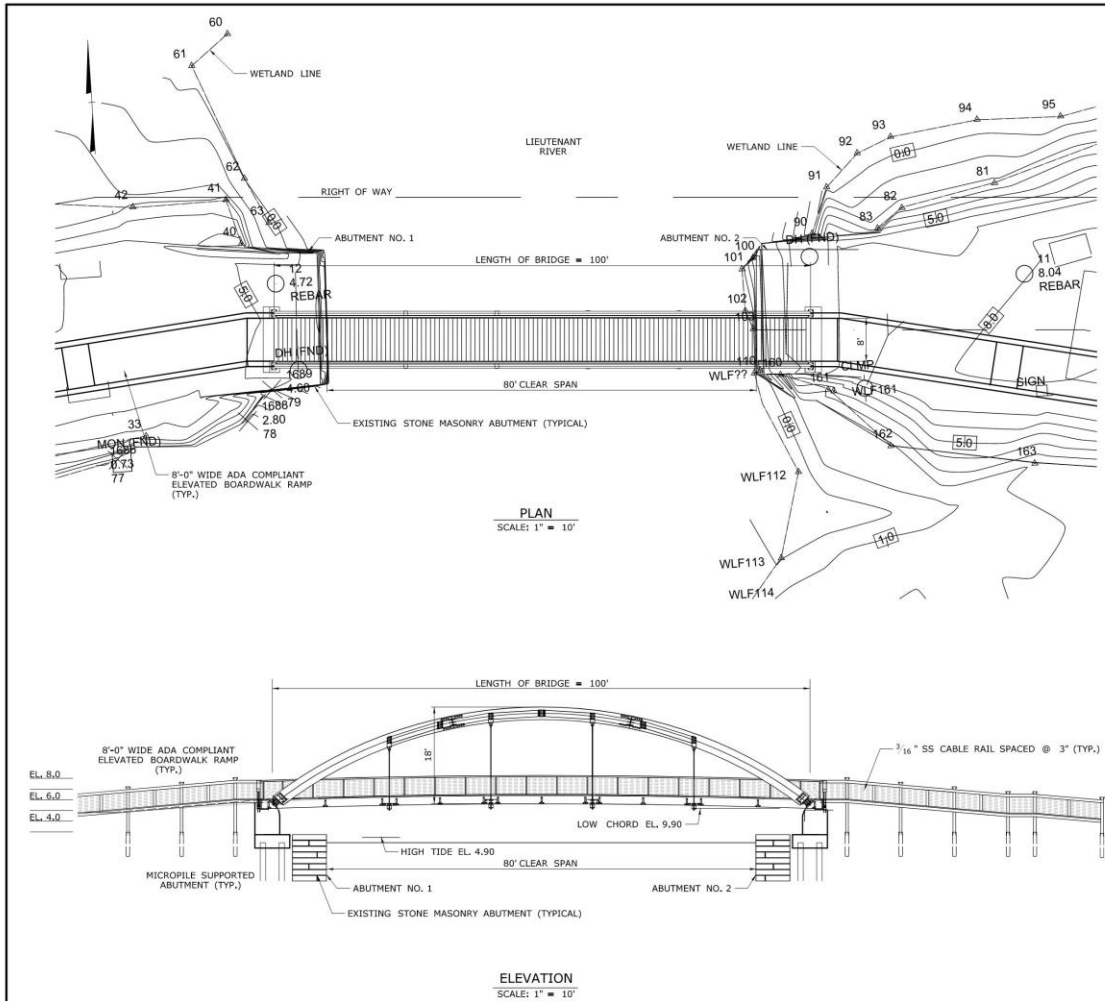
PRELIMINARY DESIGN REVIEW

DESIGNER/DRAWER		PROJECT TITLE		TOWN		PROJECT NO.	
CHECKED BY: -		OPTION A STEEL BOWSTRING PEDESTRIAN BRIDGE TIMBER DECK AND CABLE RAILINGS		OLD LYME		3777	
DESIGNED BY: -		SIGNATURE/ BLOCK: AI Engineers		DRAWING TITLE		DRAWING NO.	
DATE: -		519 MIDDLE STREET MIDDLETOWN, CT 06457 Phone: (860) 633-7740 Fax: (860) 639-7512 www.aiengineers.com		GENERAL PLAN		SHEET NO.	
REV.	DATE	REVISION DESCRIPTION	SHEET NO.	Noted Date: 8/2/2023	AI ENGINEERS		

PEDESTRIAN BRIDGE OPTION 'B' GLULAM SIDE GIRDER BRIDGE



PEDESTRIAN BRIDGE OPTION 'C' TIMBER GLULAM ARCH BRIDGE



REVISIONS			DESIGNERS/DRAWERS		SIGNATURE/NO.		PROJECT TITLE		TOWN		PROJECT NO.	
REV.	DATE	REVISION DESCRIPTION	DESIGNER	DRAWER	SIGNATURE	NO.	PEDESTRIAN BRIDGE OVER LEUTENANT RIVER		OLD LYME		3777	
							TIMBER ARCH PEDESTRIAN BRIDGE GLULAM DECK AND CABLE RAILINGS		GENERAL PLAN		DRAWING NO.	
							OPTION C				SHEET NO.	
							GLULAM DECK AND CABLE RAILINGS					

PRELIMINARY CONSTRUCTION COST ESTIMATES

OPTION 'A' - STEEL 'BOWSTRING' BRIDGE

Bridge & Foundation Construction:	\$536,000
East & West Boardwalks Approaches:	\$190,000
Art or Theme Trail Work:	\$415,000
Site Work (demo, erosion control, etc.):	\$315,000
Overhead Utility Work (Approximate):	\$200,000

Preliminary Cost: \$1,656,000

OPTION 'B' - GLULAM SIDE GIRDER BRIDGE

Bridge & Foundation Construction:	\$437,000
East & West Boardwalks Approaches:	\$190,000
Art or Theme Trail Work:	\$415,000
Site Work (demo, erosion control, etc.):	\$315,000
Overhead Utility Work (Approximate):	\$200,000

Preliminary Cost: \$1,557,000

OPTION 'C' - TIMBER GLULAM ARCH BRIDGE

Bridge & Foundation Construction:	\$417,000
East & West Boardwalks Approaches:	\$190,000
Art or Theme Trail Work:	\$415,000
Site Work (demo, erosion control, etc.):	\$315,000
Overhead Utility Work (Approximate):	\$200,000

Preliminary Cost: \$1,537,000

A scenic view of a lake with reeds and trees under a blue sky with white clouds. The water is calm, reflecting the sky and the surrounding greenery. The sky is filled with fluffy white clouds, and the trees on the right are lush and green. The reeds on the left are tall and golden-brown.

THANK YOU!

QUESTIONS?